
PARKS MASTER PLAN

City of Socorro, Texas

2017 to 2027



1.26.2018 DRAFT

Prepared by:



TABLE OF CONTENTS

List of Figures.....	ii
Acknowledgements.....	iii
1. INTRODUCTION AND BACKGROUND	1
Purpose of the Plan.....	1
City of Socorro.....	2
Goals and Objectives	5
2. METHODOLOGY AND APPROACH.....	6
Process.....	6
3. FACILITY INVENTORY	8
4. DEMOGRAPHICS.....	23
5. STANDARDS AND GUIDELINES	26
NRPA Standards and Park Classifications.....	26
Local Standards and Concepts	28
6. NEEDS ASSESSMENT.....	30
Demand-based	31
Standards-based	33
Resource-based.....	34
Metrics-based.....	35
7. PRIORITIZATION AND IMPLEMENTATION	36
Priority List of Needs	36
Implementation.....	37
8. APPENDICES	42
Public Input Documentation.....	42
Proof of Adoption	42

LIST OF FIGURES

Figure 1. Location Map.....	2
Figure 2. Population, 2000-2015	23
Figure 3. Population Projections, 2015-2030.....	23
Figure 4. Population Pyramid, 2010	24
Figure 5. Population Pyramid, 2015.....	24
Figure 6. Population by Ethnicity	25
Figure 7. Housing Units by Type, 2015.....	25
Figure 8. Income and Poverty.....	25
Figure 9. Socorro Park Standards.....	28
Figure 10. Service Areas Map	29
Figure 11. Standards-based Needs Assessment	33
Figure 12. Flood Zones Map	34
Figure 13. Median Parks per 10,000 Residents and Park Acres per 1,000 Residents.....	35
Figure 14. Summary Action Plan Table	38

ACKNOWLEDGEMENTS

This master plan was developed by the City of Socorro, Texas with assistance from Parkhill, Smith and Cooper, Inc. The project team would like to acknowledge the residents, stakeholders, and community leaders who participated in the master planning process. The following individuals are recognized for their significant contributions toward the preparation of this plan.

Mayor

Elia Garcia | Mayor

City Council

Cesar Nevarez | District 1

Ralph Duran | District 2

Victor Perez | District 3

Yvonne Colon-Villalobos | District 4

Rene Rodriguez | At Large

Staff

Adriana Rodarte | City Manager

Miguel Rosas | Public Works Director

Consultants

Parkhill, Smith and Cooper, Inc. | Parks Master Planning

On behalf of Parkhill, Smith and Cooper, Inc., we would like to extend our appreciation to the Socorro community for the opportunity to assist you in developing this report.

Hector De Santiago, AIA | Firm Principal

Michael Howard, ASLA, AICP | Project Manager

501 W. San Antonio | El Paso, Texas 79901 | 915.533.6811 | team-psc.com

1. INTRODUCTION AND BACKGROUND

Purpose of the Plan

The purpose of this plan is to serve as a comprehensive guide and planning tool to assist the City of Socorro in making informed decisions regarding the development of the parks system and establish a framework for long-range facility master planning efforts over the next ten years. The plan will address the demographic profile of the community and future population growth; establish citizen-driven goals and objectives and create a vision for the future of the parks system; rely on significant community outreach and public input; define local park standards and benchmark the system against peer communities; inventory existing park amenities and recreation opportunities and determine future park needs; and finally, prioritize needs and outline a realistic timeline with funding resources identified for the strategic implementation of the parks master plan.

Plan Duration

Parkhill, Smith and Cooper, Inc. was engaged by the City of Socorro, Texas to develop this master plan in February 2016. The intended duration of this master plan is ten years, from 2017 to 2027. Data used in this study was collected during the summer of 2016. It is recommended that the information contained in this report be reviewed regularly and updated at no longer than a five-year interval. The findings of this study are detailed in the following report.

Coordination with other plans

The Town of Socorro completed a Comprehensive Plan for the community in 2014 with support from a consultant team led by Sites Southwest. The comprehensive plan laid the groundwork for this master plan and effort was made to coordinate this plan with the Comprehensive Plan and build upon it with further detail.

City of Socorro

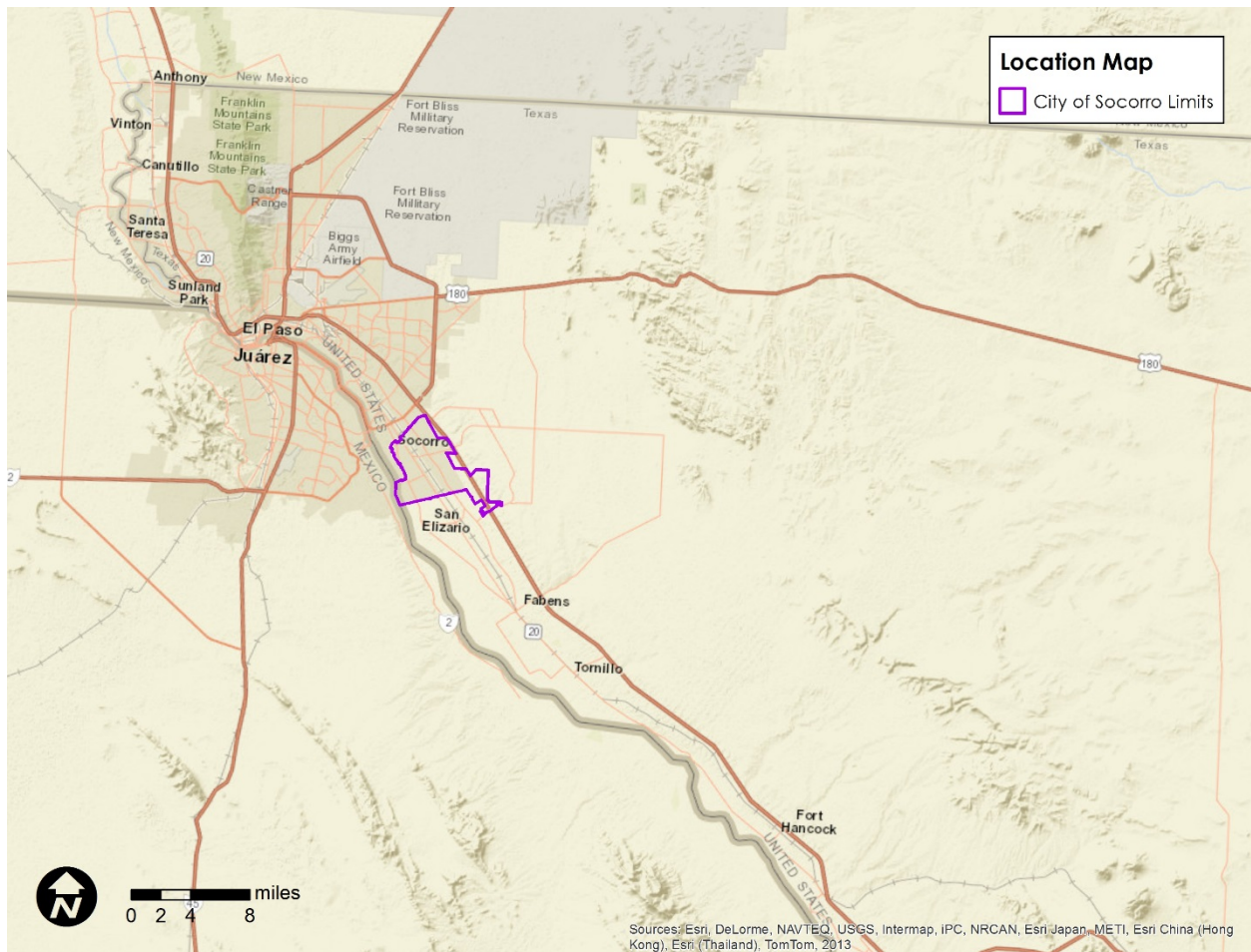
Unit of Government

Socorro, Texas, is a city of more than 32,000 people in El Paso County on the Mexico border and is located about ten miles southeast of downtown El Paso. The city is located in the middle of the West Texas portion of the Mission Valley Trail. To the east of the City of Socorro is the San Elizario Mission; to the west, the Ysleta Mission. Socorro is El Paso County's second-largest municipality, after El Paso.

The City of Socorro operates under a city council/city manager form of government. Residents are represented on the city council by six elected members, a mayor and five city council members including four council districts and one at-large representative.

This master plan is comprehensive and covers the entire jurisdiction of the City of Socorro. The city limits of Socorro includes approximately 22 square miles of land.

Figure 1. Location Map



History

Socorro was settled in the aftermath of the 1680 Pueblo Revolt, which resulted in the expulsion of all Spanish settlers from New Mexico. In 1682, the Spanish established a mission in Socorro, formally known as Nuestra Señora de la Limpia Concepción de los Piros de Socorro del Sur. The first permanent structure was built in 1691 but was swept away by floodwaters of the Rio Grande in 1744. Shortly afterward a second church was built and subsequently washed away in 1829 when the Rio Grande cut a new channel south of the old one. The main structure of the present Socorro mission was completed in 1843. By that time the town of Socorro had developed around the mission and had a population of 1,100.

The town was a part of Mexico from 1821 to 1848, when it became a part of the State of Texas as a result of the US-Mexican War. For the rest of the 19th century Socorro remained a small farming community. Locally constructed acequias supplied water for agricultural crops, which included vineyards, fruit trees, and grains. The town, together with other Rio Grande communities, played an active role in county politics until 1881 when the railroads arrived and shifted the political power structure to the City of El Paso.

In 1916, the construction of Elephant Butte Dam along the Rio Grande resulted in an agricultural revolution that transformed the family-based system into large-scale agricultural production on plantation-sized estates. Small farms, manual labor, and vineyard culture gave way to large landholdings where machinery was used in the cultivation of cotton and alfalfa. By 1920, cotton was beginning to rival copper as the area's principal industry. Socorro's population was 2,123 in the mid-1930s, but fell to 350 by 1941 and remained static for several decades thereafter.

During the 1960s and 1970s the number of residents increased at a rapid rate. Developers built residential subdivisions that lacked paved streets, water, and sewer lines. Residents of these antiquated neighborhoods—also known as colonias—put great pressure on existing wells throughout Socorro as the town's population grew from 10,000 in the middle 1970s to 18,000 in the late 1980s and 22,995 in 1990. By 2000, Socorro's population was 27,152. In recent years the Lower Valley Water District Authority received the necessary assistance to begin construction of new water and sewage systems for the area.

Throughout its long history, the Town of Socorro has unincorporated and reincorporated several times. In 1985 the threat of annexation of the entire town by El Paso sparked the most recent effort to reincorporate Socorro. The result ended with Socorro residents blocking El Paso's plan to annex the town by a margin of 263 votes to remain a separate corporation. Since then, Socorro has continued to grow. The City adopted a

Comprehensive Master Plan (1988), as well as ordinances and codes to regulate land use and halt uncontrolled growth. It also created a Historic Landmark Commission to encourage historic preservation.

Sources: Adapted from the City website and 2014 Comprehensive Master Plan

Role in providing Parks and Recreation

This master plan creates a vision and strategic plan for the park system including park development and recreational services to serve the needs of the residents of Socorro. It will serve as the roadmap for the next 10 years and allow for fiscally responsible implementation. The ultimate goal of this plan is to aid in the creation an equitable, balanced system that contributes to a vibrant, thriving community.

Goals and Objectives

The goals and objectives for the master plan and park system include:

1. Provide parks and recreational services that at a minimum **meet the level of service needs** of the residents with **practical standards**.
2. Provide **well-maintained** park amenities that are **operationally and financially sustainable** and do not exceed the capacity of city staff and resources.
3. Provide parks that are **safe and secure**.
4. Provide recreational opportunities and amenities for residents of **all ages**.
5. Identify and acquire new parkland in underserved areas where to improve **equitable access and geographic reach** where recreational access is limited. Identify areas in need of park service, and develop new parks in those areas as funding allows.
6. Ensure that all parks are **ADA-accessible** and make improvements where needed.
7. Develop parks that are **environmentally sustainable** using construction techniques and maintenance practices that promote water conservation and long-term viability of landscaping, with an emphasis on xeriscaping.
8. Promote access to parks with sidewalks and **connectivity of the park system** through a city-wide trail system, preserving green infrastructure where possible.
9. Work with the Socorro Independent School District to develop an **agreement on the joint use** of recreational facilities.
10. Modify the **subdivision regulation** to require developers to provide cash in lieu of land where a new subdivision is within the geographic service area of an existing park as defined by an adopted level of service standard, or alternatively, provide land in an area outside of an existing park service area.

2. METHODOLOGY AND APPROACH

This master plan was created in partnership between city staff and the consultant team of Parkhill, Smith, and Cooper, Inc. Members of the Park Board played an advisory role throughout the planning process. Furthermore, considerable attention was given to the input of the Socorro residents who participated in an online survey and town hall meeting.

Process

Inventory of Facilities

The master planning process began with taking an inventory of current facilities within the park system. This step was crucial to assessing needs and gaps in services and amenities.

Demographic Analysis

Population and socio-economic data was analyzed to benchmark the existing profile of Socorro residents and forecast future needs based on population projections.

Goals and Objectives

Specific goals and objectives were identified based on staff discussion in addition to comments received from the community outreach efforts, and coordinated with the most recent Comprehensive Plan.

Standards Development

Level of Service standards were developed to identify needs and provide a consistent, equitable benchmark by which to provide services and amenities throughout the entire jurisdictional area.

Needs Assessment

In addition to the efforts outlined above, further needs were identified using a combination of a demand-based, standard-based, and resource-based approaches.

Prioritization

A priority list was created ranking the needs identified during the planning process from highest to lowest, compiled by recreation elements, and separated by outdoor and indoor needs.

Implementation Plan

The implementation was developed by identifying all possible sources of funding for park improvements and assigning a budget and timeline to each park improvement and/or recreational element.

Public Input

Community outreach was established as a high priority from the beginning of the master planning process. Public input was gathered through a town hall meeting, the Park Board, and an online survey.

Documentation of the public input efforts can be found in an appendix to this report, including the public meeting notice, town hall sign-in sheet, a copy of the online survey, and the summary of the online survey results.

3. FACILITY INVENTORY

The City of Socorro provided the consultant team with a current inventory of the park system. Each facility was visited to confirm existing conditions and identify and document further concerns or issues.

The following pages document the current facility inventory.

Park Facilities

The City of Socorro currently operates 10 parks as listed in the table below, totaling approximately 46 acres. The size of parks are generally small, ranging from less than one-acre up to just over 11 acres.

Park	Type	Acres
Amistad Park	Neighborhood	2.1
Bulldog Park	Community	6.2
Cielo Del Rio Park	Mini	0.8
Cougar Park	Community	10.4
Mauro Rosas Park	Neighborhood	3.1
Moon Park	Neighborhood	2.5
Paradise Park	Neighborhood	1.5
Rio Vista Park	Community	11.4
Valle del Sol Park	Neighborhood	4.4
Montreal Park	Neighborhood	3.7
Total Park Acreage		46.1

Undeveloped Parks

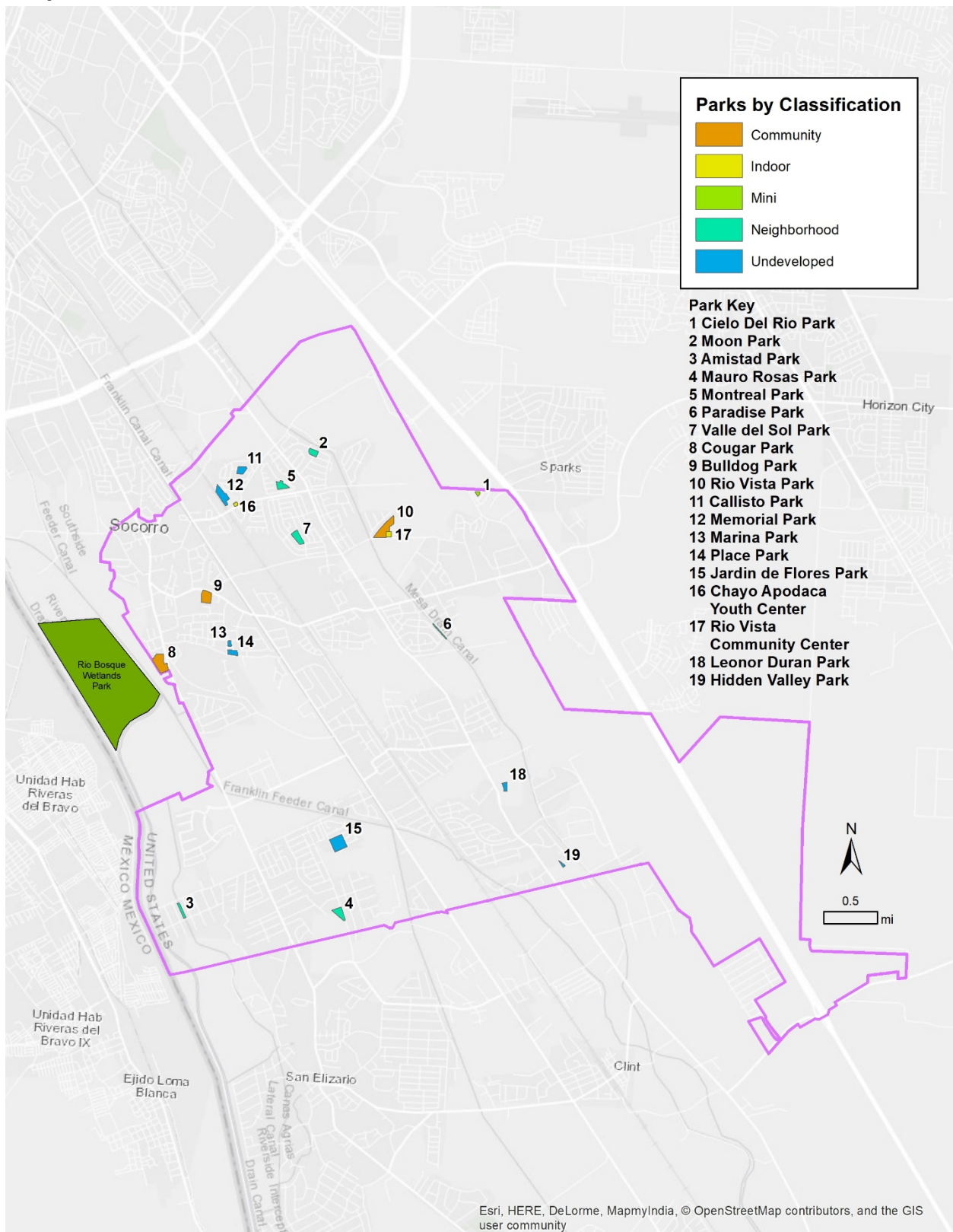
The city owns an additional 26.3 acres of park land across 7 park sites that are undeveloped. Many of these sites currently serve as stormwater retention areas.

Park	Current Use	Potential Use	Acres
Callisto Park	Drainage/Open Space	Neighborhood Park	3.3
Hidden Valley Park	Vacant/Undeveloped	Mini Park	0.7
Jardin de Flores Park	Drainage/Open Space	Community Park	10.1
Leonor Duran Park	Vacant/Undeveloped	Mini Park	2.0
Marina Park	Drainage/Open Space	Mini Park	1.0
Memorial Park	Vacant/Undeveloped	Community Park	6.7
Place Park	Vacant/Undeveloped	Neighborhood Park	2.5
Total Park Acreage			26.3

Indoor Facilities

In addition to parks, Socorro operates 2 indoor facilities, Rio Vista Community Center and Chayo Apodaca Youth Center, offering recreational and community programs.

Map of Park Facilities



Parks managed by others

The residents of Socorro are served by a regional park adjacent to the city limits on the west side named Rio Bosque Park. Rio Bosque Park is a 372-acre regional park in the City of El Paso park system, but managed by the University of Texas at El Paso through its Center for Environmental Resource Management.

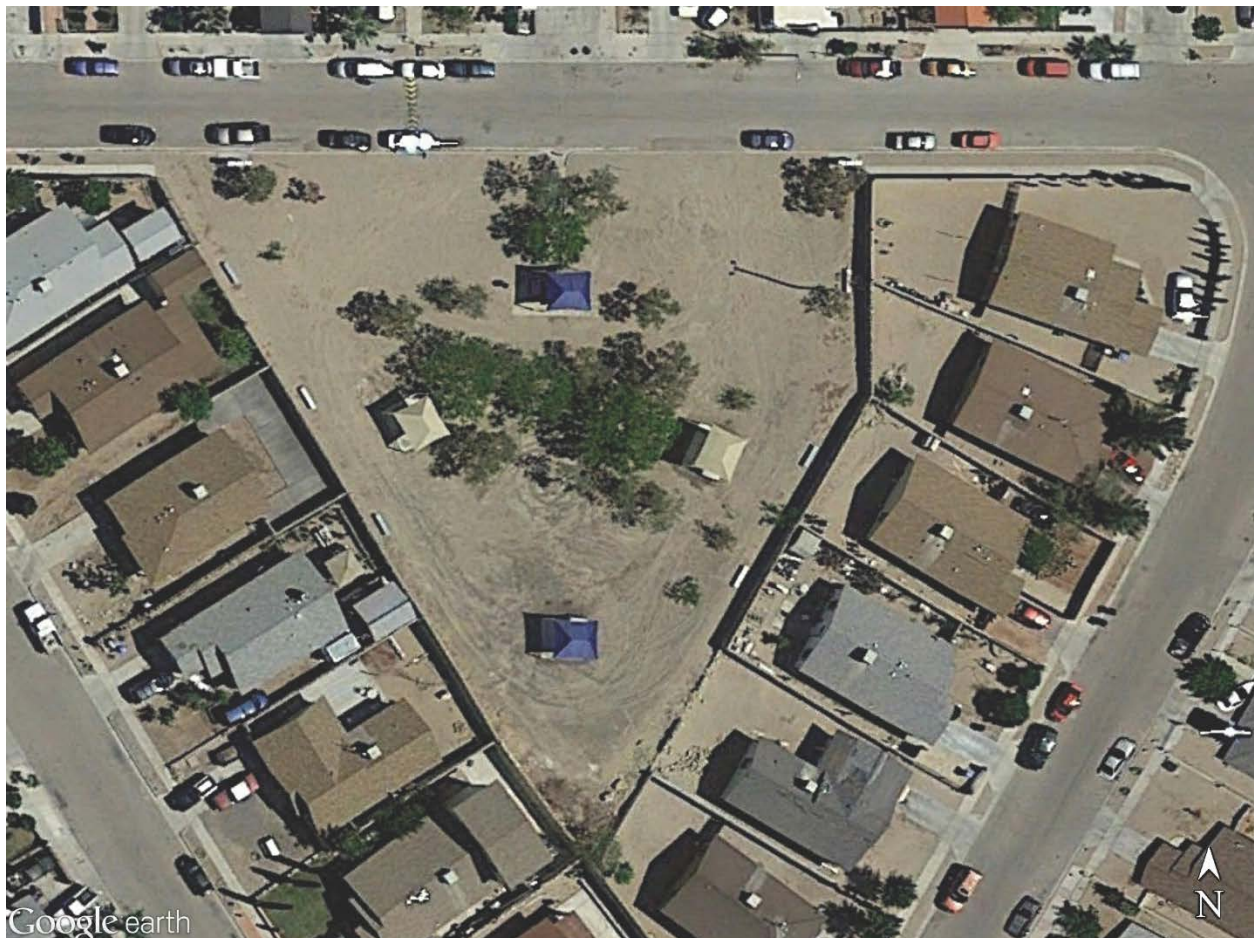
Socorro ISD Park Facilities

There is currently not a joint-use agreement between the City of Socorro and Socorro ISD allowing for the use of school-owned recreational areas and amenities by residents. One of the goals determined in both the Comprehensive Plan and this plan is to develop such as agreement.

The following pages provide detailed descriptions of each park facility.

1. Cielo Del Rio Park

Cielo Del Rio Park is Socorro's smallest park at 0.77 acre in size. It is located in the Cielo Del Rio Subdivision in the eastern-most portion of Socorro, adjacent to I-10. The park contains a picnic table and shade structure, one trash receptacle, six benches, and a total of 20 trees. There are no bathroom facilities, playing fields, or playground equipment. Cielo Del Rio Park does have an ADA-accessible access ramp and ample streetside parking. The park's overall landscape is in poor condition, however, and there is no signage identifying the property as a public park.



2. Moon Park

Moon Park is a 2.56 acre neighborhood park located in the Delip Subdivision, found in the northeastern portion of Socorro. Moon Park has a soccer field, an open play area with playground equipment, two basketball courts, a handball court, and walking trail. The park also has a gazebo, portable bathroom facilities, five picnic tables, three shade canopies, four grills, eight benches, and five trash receptacles. Moon Park has signage identifying it as a public park, grass and more than 20 trees; however, the park's landscape is in poor condition.



3. Amistad Park

Amistad Park is 2.06 acres in size and is located in the Gran Valle Subdivision in the southwestern portion of Socorro. Amistad Park contains a soccer field, an open play area with playground equipment, a basketball court, a walking trail and 12 trees. The park also contains one trash receptacle. Amistad Park does not have bathroom facilities or any shade structures. In addition, the park's grass and overall landscape are in poor condition and there is no signage identifying the property as a public park.



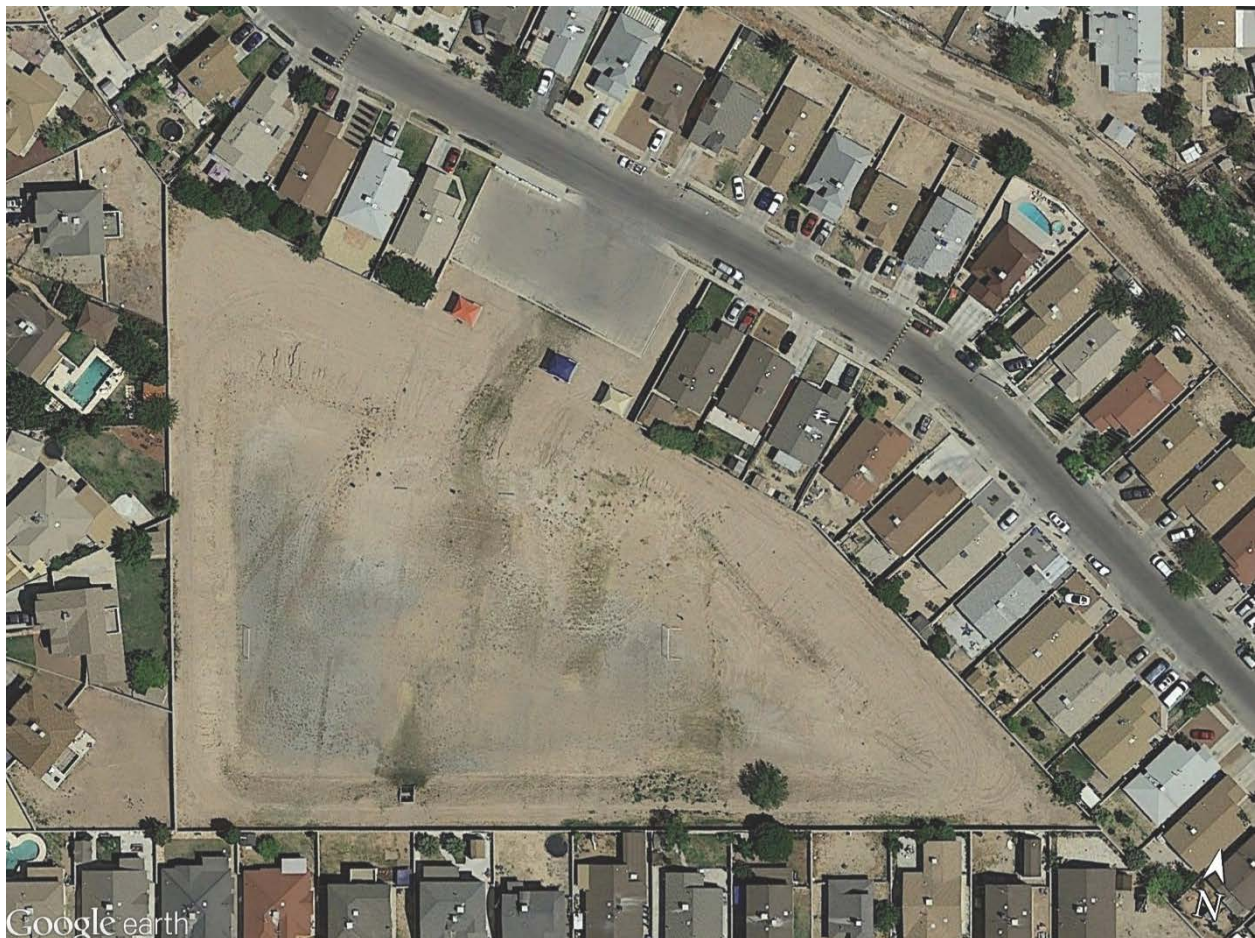
4. Mauro Rosas Park

Mauro Rosas is 3.1 acre neighborhood park and is located in the Flor del Rio Subdivision in southern Socorro. The park was formerly known as Bonita Park and recently underwent a renovation. The park now has a walking trail, playground, restroom facility, and two basketball courts.



5. Montreal Park

Montreal Park is a 3.64 acre park located in the Montreal Estates subdivision in northern Socorro. The park, which also serves as drainage facility for the subdivision, includes a soccer field and an open play area, but has no other amenities. The park has no trees or grass, and its landscape is in poor condition. While there is a parking area for Montreal Park, there are no signs identifying it as a public park.



6. Paradise Park

Paradise Park is 1.49 acres in size and located between the Country Green and Cottonwood Cove Subdivisions in east-central Socorro. The park's amenities include a handball court, a baseball field, and an open play area with playground equipment. Paradise Park also contains three picnic tables with trash receptacles. While the park has grass and more than 35 trees, the landscape is in relatively poor condition. In addition, Paradise Park lacks bathroom facilities, a designated parking area, and signage identifying it as a public park.



7. Valle del Sol Park

Valle del Sol Park is 4.41 acres in size. The park, which also serves as a drainage facility, is located in the Valle del Sol Subdivision in north central Socorro. It includes an open play area with playground equipment, three picnic tables and four trash receptacles. Rio Vista Park also has grass, more than 15 trees, and a sign identifying it as a public park; however, the park's landscape is in poor condition. In addition, there are no parking areas or bathroom facilities.



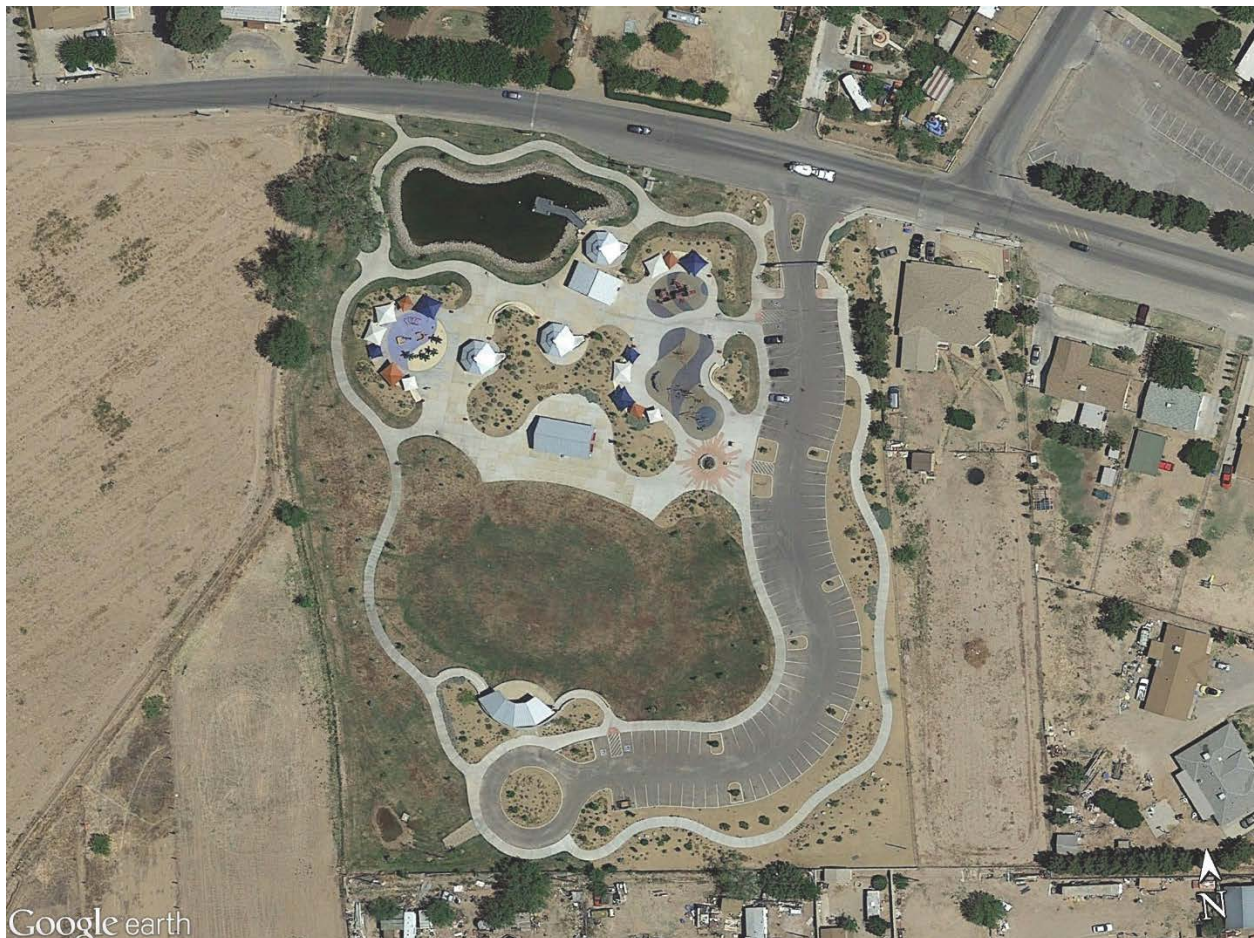
8. Cougar Park

Located off of Socorro Road in the city's Historic Mission District, Cougar Park is Socorro's largest park at 10.43 acres in size. Cougar Park contains a soccer field, three baseball fields with bleachers, a basketball court, 10 picnic tables, bathroom facilities, six trash receptacles, three grills, and eight benches with shade canopies. While the park also has grass and more than 20 trees, the landscape is in relatively poor condition. The park has an open play area with three sets of playground equipment, as well as parking and signage identifying it as a public park.



9. Bulldog Park

The Bulldog Championship Park along Buford Road opened in August 2012. It features an entry sculpture, a splash pad, plaza, playgrounds, open space and amphitheater with open space for public seating. It also incorporates parking and an outer loop trail that connects to all the amenities. The park's detention pond and bridge acts as a focal point and allows the park to reuse recycled graywater for irrigation purposes.



10. Rio Vista Park

Rio Vista Park is 11.42 acres in size and is located adjacent to the County Courthouse in the City's northeastern portion. The park has three baseball fields and an open play area with playground equipment, eight picnic tables, seven trash receptacles, four benches and a bathroom facility. Rio Vista Park also has grass, more than 80 trees, a parking area, and two signs identifying it as a public park; however, the park's landscape is in poor condition.



Park Amenities Summary Table

	Amistad Park	Cielo Del Rio Park	Cougar Park	Maura Rosas Park (Bonita)	Moon Park	Paradise Park	Rio Vista Park	Valle del Sol Park	Montreal Park	Bulldog Park	Total
Soccer Fields	1	0	1	0	1	0	0	0	1	0	4
Baseball Fields	0	0	3	0	0	0	3	0	0	0	6
Basketball Court	1	0	1	2	2	1	0	0	0	0	7
Football Field	0	0	0	0	0	0	0	0	0	0	0
Handball Court	0	0	0	0	1	2	0	0	0	0	3
Open Play Areas	1	0	1	1	1	1	1	1	1	1	9
Playgrounds	1	0	2	1	1	1	1	2	0	2	11
Exercise Station	0	0	0	0	0	0	0	0	0	0	0
Bathroom Facilities	0	0	1	1	0	0	1	0	0	1	4
Shade Structures	0	4	8	0	8	5	0	5	3	15	48
Gazebos	0	0	0	0	1	0	0	0	0	3	4
Amphitheatre	0	0	0	0	0	0	0	0	0	1	1
Picnic Tables	0	4	10	0	5	3	8	3	3	20	56
Benches	0	6	8	1	8	0	4	7	0	10	44
Trash Receptacles	1	1	6	0	5	3	7	4	4	10	41
Grills	0	0	3	0	4	0	0	0	3	0	10
Trail/Walks	1	0	0	1	1	0	0	0	0	1	4
Pond	0	0	0	0	0	0	0	0	0	1	1
Splash Pad	0	0	0	0	0	0	0	0	0	1	1
Pier/Dock	0	0	0	0	0	0	0	0	0	1	1
Trees	12	20	20	18	20	35	80	15	13	45	278
Parking Spaces	0	10	29	0	10	0	70	0	22	94	235
Site Lighting	Y	Y	Y	Y	N	N	N	Y	N	Y	
Park Signage	N	N	Y	N	Y	N	Y	Y	N	Y	
Fencing	Y	N	Y	N	Y	N	N	N	N	N	
ADA Accessible	N	Y	N	Y	N	N	N	N	N	Y	
Irrigation	N	N	Y	Y	Y	N	N	N	N	Y	
Grass	Y	N	Y	Y	Y	Y	Y	Y	N	Y	
Landscaping	N	N	N	N	N	N	N	N	N	Y	

4. DEMOGRAPHICS

Demographics play a key role in park planning. Like any public service or resource, a park system must have a capacity to satisfy the current population, while master planned to meet the needs of future growth. Deciding where and what to improve in a park system is dependent on the distribution, density, and diversity of the residents for which the park system serves.

The following demographic analysis summarizes the unique profile of Socorro residents. Data sources include US Census Bureau, American Community Survey, and Texas Water Development Board.

Population

Despite steady growth from 2000-2010 at an average annual rate of 1.8%, population has slowed to only 0.5% per year between 2010 and 2015. These rates are consistent with the growth trend for the region as shown in the table below.

Figure 2. Population, 2000-2015

	2000 Population	2010 Population	2015 Population	2000-2010 Avg Annual % Change	2010-2015 Avg Annual % Change
Town of Socorro	27,152	32,013	32,877	1.8%	0.5%
City of El Paso	563,662	649,085	676,325	1.5%	0.8%
El Paso County	679,622	800,647	831,095	1.8%	0.8%

Over the next 5 years, Texas Water Development Board projects population growth to continue in the region, although at a faster rate than Socorro has experienced in the previous decade. By the end of this plan's duration in 2027, Socorro is likely to have a population of near 40,000.

Figure 3. Population Projections, 2015-2030

	2015 Population	2020 Population	2030 Population	2000-2010 Avg Annual % Change	2010-2015 Avg Annual % Change
Town of Socorro	32,877	37,031	42,267	2.5%	1.4%
City of El Paso	676,325	734,031	822,625	1.7%	1.2%
El Paso County	831,095	925,565	1,055,903	2.3%	1.4%

Age

A comparison of the 2010 and 2015 population pyramids (shown below) indicate a declining school age population and an increasing senior age population. Also of significance is the shift from a balanced sex distribution to a female dominant pyramid.

Figure 4. Population Pyramid, 2010

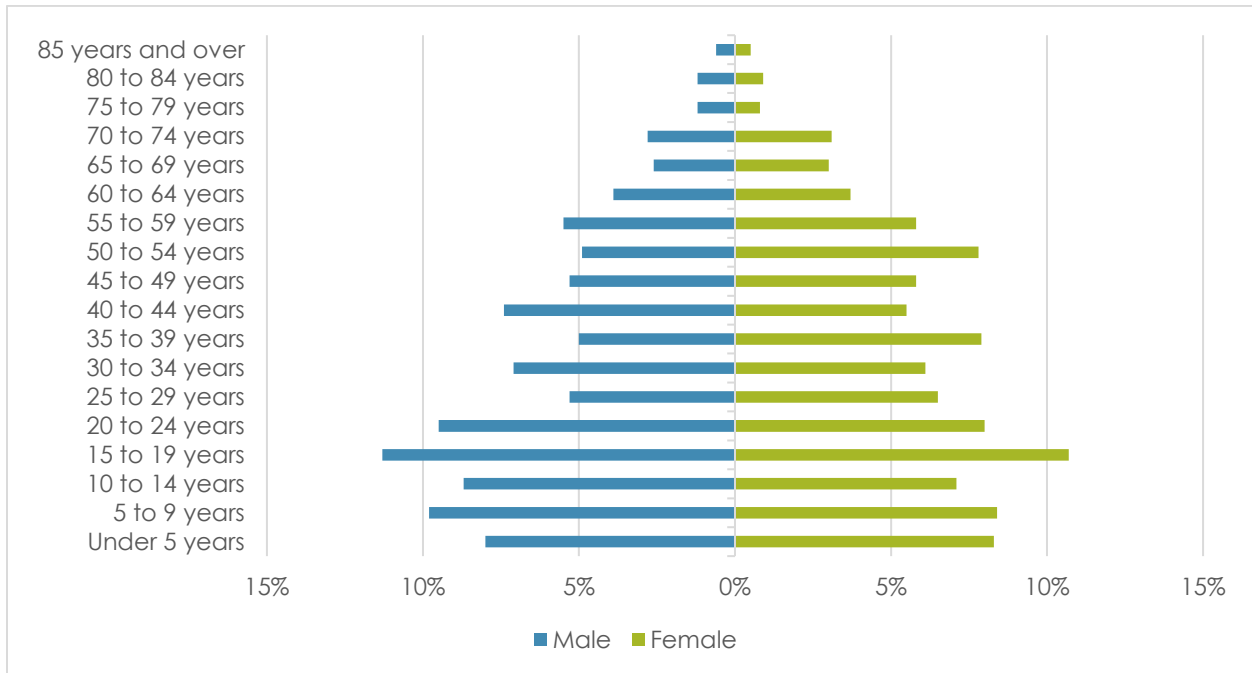
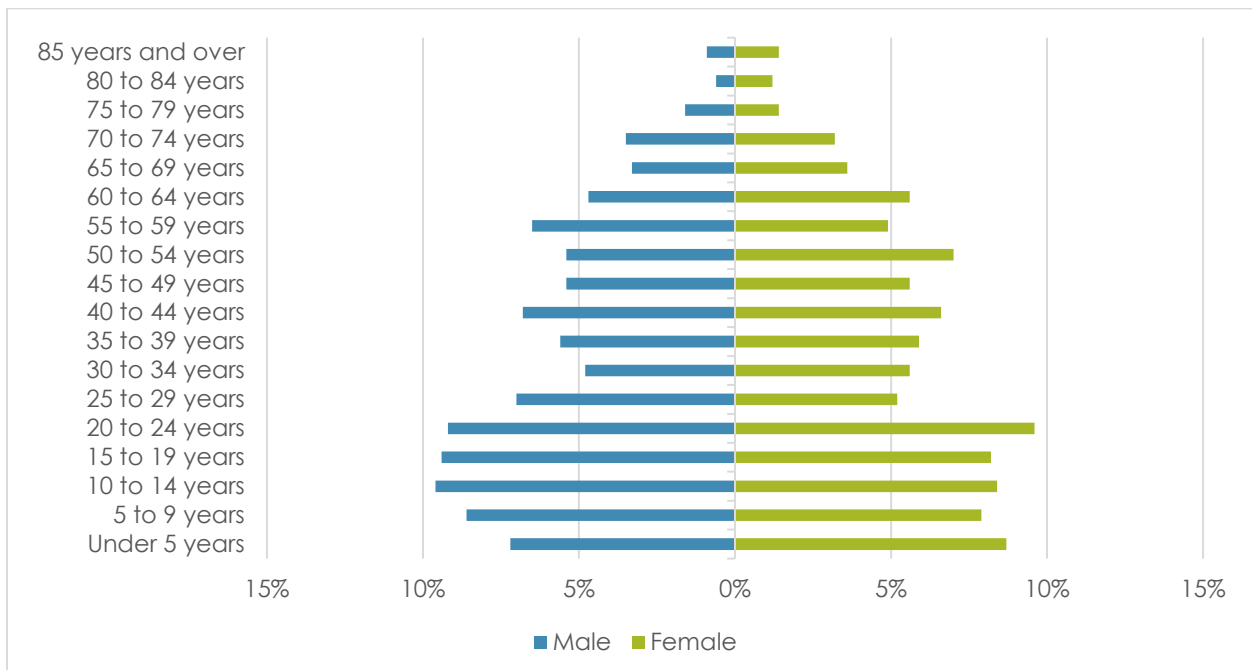


Figure 5. Population Pyramid, 2015



Ethnicity

Socorro has a predominantly White Hispanic population at 85% of the total population, with a vast majority (95%) of these residents identifying as Hispanic or Latino of Mexican descent. The second most represented race in Socorro is Native American at 2.5%. No other single ethnicity represents more than a single percentage outside of White Hispanic and Native American.

Figure 6. Population by Ethnicity

	Population	Percent
White	28,036	85.3%
Black	288	0.9%
Native American	775	2.4%
Asian	106	0.3%
Hawaiian	96	0.3%
Other	4,154	12.6%
	32,877	

Housing

Socorro residents predominantly live in single family homes. However, one out of 5 homes in the community are mobile homes, which is a significantly higher ration than seen in the neighboring city of El Paso.

Figure 7. Housing Units by Type, 2015

	Units	Percent
Single Family	6811	71.0%
Multi Family	843	8.8%
Mobile Home	1939	20.2%
Total	9593	

Income

Socorro is economically disadvantaged in comparison to El Paso County and the State of Texas, with a third of residents living at or below the poverty line. Additionally, unemployment is significantly higher than the county and state rates.

Figure 8. Income and Poverty

	Socorro	El Paso County	Texas
Median Household Income	\$30,789	\$41,637	\$53,207
Per Capita Income	\$11,885	\$18,880	\$26,999
Percent in Poverty	33.5%	22.8%	17.3%
Unemployment Rate	10.5%	8.4%	7.0%

5. STANDARDS AND GUIDELINES

A key purpose of this plan is to measure the adequacy of the park system against a fair, established benchmark. This allows an accurate assessment of how well the current park system is meeting the needs of the present population, in addition to laying the foundation for planning to meet the forecasted demand of the future population.

Many park master plans rely on the National Recreation and Park Administration (NRPA) guidelines as a metric for developing level of service standards. The NRPA guidelines are widely accepted and therefore is important to compare the Socorro park systems against these standards as a point of reference.

However, municipalities and other parks and recreation providers are not one in the same. Comparing a local park systems against peers across the nation, with different demographic profiles and operational environments is not an apples to apples comparison. Therefore, this plan also outlines level of service standards and concepts that are unique for Socorro.

NRPA Standards and Park Classifications

The NRPA guidelines are a common standard by which park providers can establish a basis for acquiring land, developing parks, and justifying the need for additional park and recreational amenities and services.

The following section defines each of the six park classifications established by the NRPA guidelines and that were used in the master planning of the Socorro park system.

Park Classifications

1. Mini (Pocket) Park

A mini park or “pocket” park is the smallest park type. They are typically less than one acre in size with a service radius of one-quarter mile. The typical use or purpose of a mini park is to serve an isolated or unique need to a concentrated population, and are often provide a passive recreation opportunity.

2. Neighborhood Park

The neighborhood park is often the most frequently used by local residents, serving as a cohesive element within a neighborhood that contributes to a sense of community. They are often located near the center of a neighborhood with a service radius of one-half mile. A neighborhood park generally ranges in size from 1 to 10 acres and typical amenities include playgrounds, athletic fields, shade structures, and open space with landscaping.

3. Community Park

A community park serves several neighborhoods and therefore has a service radius of 2 miles. Unlike a neighborhood park, they are often accessed by driving rather than walking and often need off-street parking. More active in nature, typical amenities include practice and game fields for sport leagues, community centers, walking trails, and areas for special events. The typical size of a community park ranges from 10 to 25 acres.

4. Regional Park

A regional park is the largest park type found in small community at over 25 acres. The service area is 5 or more miles as they serve the entire community and often serve surrounding cities as well. Typical serving both passive and active recreational needs, amenities are often unique including hiking, mountain biking, wildlife viewing, fishing, boating, wildlife viewing, or natural conservation areas.

5. Special Use Park

Parks and facilities that are often classified as a special use park include golf courses, gardens, nature centers, zoos, amphitheaters or town squares. These facilities are unique and vary by community so standards are not applicable.

6. Linear Park

Linear parks are greenbelts or other natural corridors that are often used to link components of the park system and community together for greater access and connectivity. They allow for providing opportunities for walking, jogging, biking, and other exercise activities and are often created to protect the natural resources along a greenbelt.

Local Standards and Concepts

In order for Socorro to provide adequate facilities a set of standards and design criteria should be followed. It is critical that Socorro determine standards that are appropriate and applicable to this community, reflective of the unique social and geographical conditions of the area.

The following table establishes the local standards and concepts by which the City of Socorro defines as their level of service criteria, as adapted from the NRPA guidelines.

Figure 9. Socorro Park Standards

Type	Size	Service Area	Acres per 1,000 Pop.
Mini/Pocket	1/4 - 1 ac	1/2 mi	1/2 ac
Neighborhood	1-10 ac	1 mi	1 ac
Community	10-25 ac	2 mi	5 ac
Regional	25-100 ac	4 mi	10 ac
Special Use	Varies	n/a	n/a
Linear	Varies	n/a	n/a

A map of each park type showing the service area coverage is on the following page.

Figure 10. Service Areas Map



6. NEEDS ASSESSMENT

Following the public survey, facility inventory, and development of standards the master planning process began a thorough assessment of needs based on a combination of four approaches:

- 1. Demand-based**

The demand-based approach relied on information gathered from the community town hall meeting and the online public survey to determine how much the residents want or demand specific improvements to the park system.

- 2. Standards-based**

The standards-based approach uses the standards and concepts outlined in the previous chapter as a benchmark to determine if the needs of the residents are being met based on population size and geographic distribution of residents.

- 3. Resource-based**

The resource-based approach examines the assets and resources of the area for open space and other natural resources and defines how these resources can be utilized in the development of unique improvements to the park system.

- 4. Metrics-based**

The metrics-based approach utilizes a comprehensive database of operational information collected from park agencies across the United States to benchmark and compare the Socorro park system to peers with similar systems nationwide.

The following pages summarize the results of each approach to the needs assessment.

Demand-based

Town Hall Meeting

A town hall style public input meeting was held on June 15, 2016. The event was attended by city staff, the consultant team, members of the park board, and residents of Socorro. Following a presentation by the consultant team on the master planning purpose and process, residents of Socorro were invited to provide feedback and recommendations to guide the master plan.

The discussion focused on the desire to have safe, secure, and accessible parks for all residents. Residents expressed concern regarding the lack of maintenance on park facilities and the declining quality of older park amenities.

Specific park improvements requested included:

- Site lighting
- Replacement of play equipment and other worn down amenities
- Concrete walking and biking trails
- Neighborhood sidewalks
- New parks in underserved areas

Documentation of the town hall meeting is provided in an appendix to this report.

Online Survey

Following the town hall meeting, an online survey provided to all residents. The survey asked residents for feedback regarding their satisfaction with the current park system, their priorities for future park improvements and development, and the opportunity to provide open-ended comments to express further requests and concerns.

Specific park improvements requested included:

- Site Lighting
- Replacement of play equipment and other worn down amenities
- Concrete walking and biking trails
- Neighborhood sidewalks
- New parks in underserved areas
- Programs, activities, and classes for English language speakers

- Signage
- Additional baseball and softball fields
- Additional basketball courts
- Additional Soccer fields
- Pet waste informational signage and enforcement
- Restroom facilities
- Grass open play areas
- Irrigation
- Aquatic facility with pool
- Dog park
- Shade structures/pavilions
- Off-street parking

The online survey form and a detailed summary of responses are provided as an appendix to this report.

Standards-based

Chapter 5 Standards and Guidelines established standards and concepts by which Socorro can assess the adequacy of the park system primarily using two standards:

1. **Acres per 1,000 Residents**
2. **Service Area in Miles**

A unique standard was established for each park type.

Acres per 1,000 Residents

The following table assesses the current park system by each classification, addressing each classification using the current population and a projected population looking out 10 years for the duration of this master plan.

For the purposes of this analysis, the most recent known population estimate of 32,877 was used for the current 2017 population. For the projected population, an assumed 40,000 residents was determined by interpolating projections provided by Texas Water Development Board for 2020 and 2030.

Figure 11. Standards-based Needs Assessment

	Acres per 1,000 Pop. Standard	Current Acres	Standards- based Acres	2017 Current Needed Acres	2027 Projected Needed Acres
Mini	0.5	0.8	16.4	15.6	19.2
Neighborhood	1	17.2	32.9	15.7	22.8
Community	5	28.1	164.4	136.3	171.9
Regional	10	0	328.8	328.8	400.0
Total	16.5	46.1	542.5	496.4	613.9

Service Areas

The level of service map in Chapter 5 indicated is strong geographic indicator of large gaps in service areas. The northern half of Socorro has adequate access to all park types, particularly neighborhood and community parks. However, service area coverage is lacking in the southern, mainly southeastern, area of the community.

The southern half of Socorro is an area of continued growth and development in the city with new subdivisions being planned in this area. Based on the service are map, land acquisition and new parks for each classification should be focused in this area to provide equitable access to parks and recreation services to all Socorro residents.

Resource-based

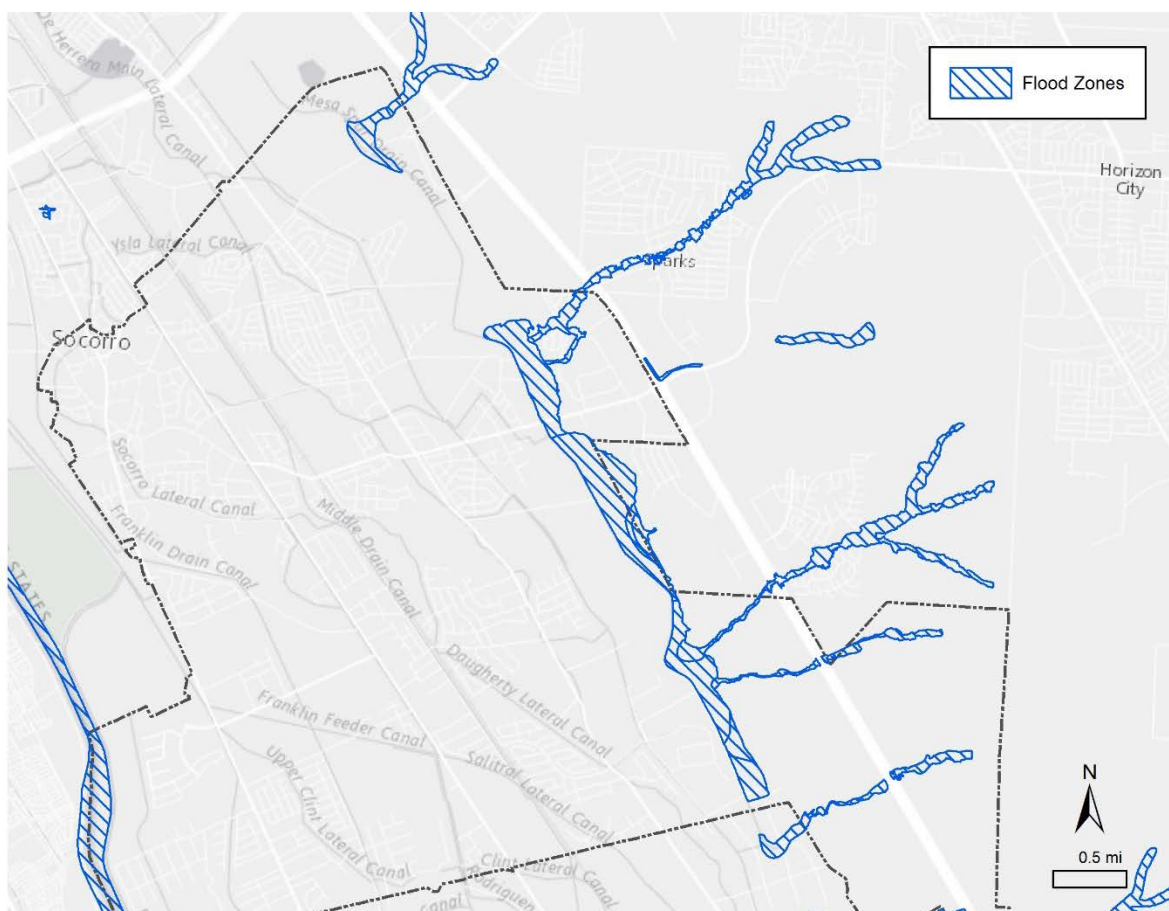
Natural physical factors influencing development

Socorro sits at an elevation approximately 3,661 feet above sea level and is 22.05 square miles in size. Its topography is relatively flat and its soil suitable for agriculture, which has been the dominant land use for much of its history. This contrasts with land to the northeast and west of its boundaries which has a much more varied topography and elevations ranging from 3,689 to more than 4,000 feet above sea level. This disparity in elevation accounts for the flood zones along the eastern border of town.

Flood Zones

Much of the eastern border of Socorro is a linear flood plain zone. While this is a hindrance to physical development of buildings, the Socorro staff identified this area as unique resource upon which to develop a recreational use. The southern portion of this flood zone is mainly a sandy desert-like area that provides an opportunity to develop a park with a system of trails for pedestrian and/or vehicular use including hiking, mountain-biking, off-road motorcycling, ATV riding, or 4x4 truck use.

Figure 12. Flood Zones Map



Metrics-based

Two common and useful metrics for benchmarking a park system against peer agencies is to look at the number of parks per 10,000 residents, and the number of park acres per 1,000 residents. The following metrics-based analysis was performed based on a comprehensive database of park information collected from several sources, including the National Recreation and Park Association, the Trust for Public Land, and data collected by the consultant team directly from partnering park agencies.

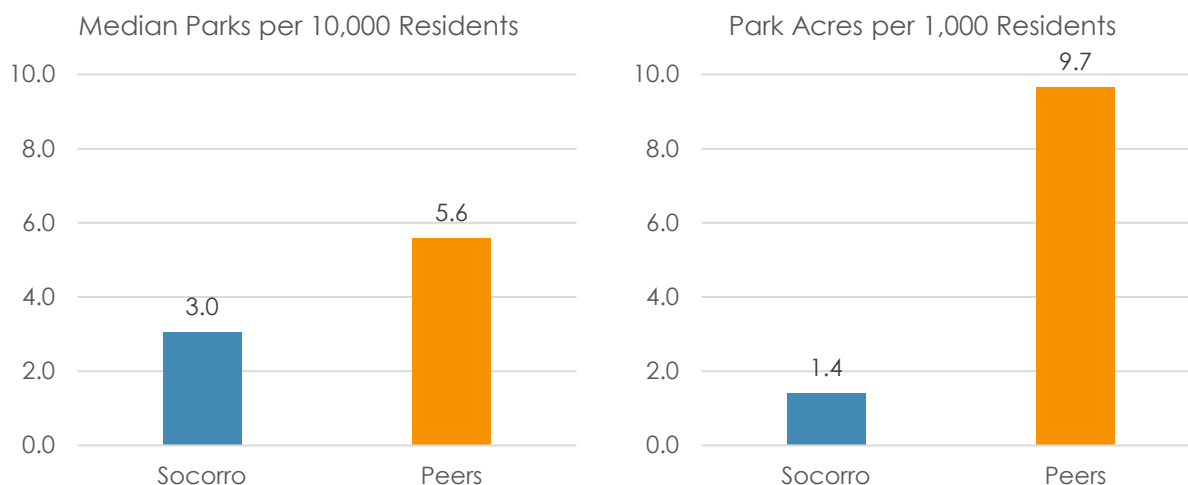
Parks per 10,000 Residents

For a community between 20,000 to 40,000 residents, parks per 10,000 residents range from 1 to 30. Socorro, with a population of 32,877 and 10 parks, provides 3.0. As shown in the chart below, the median parks per 10,000 residents provided by peers is 5.6.

Park acres per 1,000 Residents

For a community between 20,000 to 40,000 residents, park acres per 1,000 residents range from 1 to 40. Socorro, with a population of 32,877 and 46.1 acres, provides 1.4. As shown in the chart below, the median acres per 1,000 residents provided by peers is 9.7.

Figure 13. Median Parks per 10,000 Residents and Park Acres per 1,000 Residents



For Socorro to provide park land consistent with peers, it would need to add 8 additional parks and 273 additional acres based on the 2015 population.

7. PRIORITIZATION AND IMPLEMENTATION

Priority List of Needs

Developing a list of recreational and park needs was created using input from the following sources:

- Resident Input (Town Hall and Online Survey)
- City Staff (City Manager and Public Works)
- Public Officials (Mayor, Council, Parks Board)
- Consultant Team (Parkhill, Smith and Cooper)

Each of these groups examined the inventory, standards, and needs assessment as identified in this report and developed the following priorities, sorted by high, moderate, and low rankings.

Outdoor Priorities

HIGH PRIORITY	MODERATE PRIORITY	LOW PRIORITY
Grass	Aquatics Center	ATV Trails
Grills	Benches	Baseball Fields
Irrigation Systems	Fencing	Basketball Courts
Multipurpose Fields	Parking	Dog Park
Park Signage	Park Land Acquisition	Exercise Stations
Picnic Tables	Splashpads	Pavilions
Playgrounds	Trees	Restrooms
Shade Canopies	Drinking Fountains	Soccer Fields
Site Lighting		
Trash Receptacles		
Walking Trails		

Indoor Priorities

City staff and residents did not identify any indoor capital improvement needs as a priority at this time; however, residents desire to see additional youth and adult programs and activities be provided at the existing recreational centers.

Implementation

Funding Resources

The City of Socorro intends to draw upon several funding sources to implement the projects identified in this master plan, including the following:

1. City General Fund
2. In-house Labor
3. General Obligation Bond
4. Grants
5. Private Donations
6. Corporate Sponsorships
7. Fees/Charges
8. Foundations/Gifts
9. Park Dedication Fee
10. Volunteerism/In-Kind

Summary Action Plan Table

A summary action plan table is provided on the following pages identifying the proposed improvement or park amenity by ranking, location, budget, potential funding source, and a general timeline for implementation.

Costs shown in summary action plan table are general, rough order of magnitude cost opinions without detailed design analysis. Costs will vary dependent upon several factors including site location, market conditions, and design intent.

The summary action plan table is intended to guide planning decisions but remain flexible throughout the duration of the plan. Priorities and needs may change in the course of implementation. The timeline for projects is dependent upon the availability of funds among other factors.

A matrix of proposed improvements by location and a description of each proposed improvement with greater detail regarding scope and intent follows the table.

Figure 14. Summary Action Plan Table

OUTDOOR NEEDS	PRIORITY RANKING	PARK LOCATIONS	BUDGET / UNIT COSTS	FUNDING SOURCES	TIMELINE
Grass	High	See matrix below	\$0.10-\$0.20/sf	See list above	1-2 years
Grills	High	See matrix below	\$250-\$500	See list above	1-2 years
Irrigation Systems	High	See matrix below	\$15k-\$20k/ac	See list above	3-5 years
Multipurpose Fields	High	See matrix below	\$5k-\$10k	See list above	3-5 years
New Neighborhood Parks	High	See matrix below	\$500k-\$750k	See list above	3-5 years
Park Signage	High	See matrix below	\$750-\$1k	See list above	1-2 years
Picnic Tables	High	See matrix below	\$1k-\$2k	See list above	1-2 years
Playgrounds	High	See matrix below	\$50k-\$75k	See list above	1-2 years
Shade Canopies	High	See matrix below	\$10k-\$20k	See list above	1-2 years
Site Lighting	High	See matrix below	\$20k-\$40k	See list above	3-5 years
Trash Receptacles	High	See matrix below	\$500-\$1k	See list above	1-2 years
Walking Trails	High	See matrix below	\$20-\$30/lf	See list above	3-5 years
Aquatics Center	Moderate	See matrix below	\$2m-\$3m	See list above	5-10 years
Benches	Moderate	See matrix below	\$500-\$1k	See list above	1-2 years
Fencing	Moderate	See matrix below	\$60-\$80/lf	See list above	3-5 years
Parking	Moderate	See matrix below	\$2,500/stall	See list above	3-5 years
Park Land Acquisition	Moderate	See matrix below	\$50k-\$75k/acre	See list above	5-10-years
Splashpads	Moderate	See matrix below	\$100k-\$200k	See list above	5-10 years
Trees	Moderate	See matrix below	\$500-\$750	See list above	1-2 years
Drinking Fountains	Moderate	See matrix below	\$2k-\$3k	See list above	3-5 years
ATV Trails	Low	See matrix below	\$250k-\$500k/mile	See list above	5-10 years
Baseball Fields	Low	See matrix below	\$500k-\$750k	See list above	5-10 years
Basketball Courts	Low	See matrix below	\$75k-\$100k	See list above	5-10 years
Dog Park	Low	See matrix below	\$250k-\$500k	See list above	5-10 years
Exercise Stations	Low	See matrix below	\$50k-\$75k	See list above	3-5 years
Pavilions	Low	See matrix below	\$25k-\$50k	See list above	5-10 years
Restrooms	Low	See matrix below	\$50k-\$75k	See list above	5-10 years
Soccer Fields	Low	See matrix below	\$20k-\$40k	See list above	5-10 years

Proposed Improvements by Park Location Matrix

OUTDOOR NEEDS	PRIORITY RANKING	Amistad	Bulldog	Cielo Azul	Cougar	Mauro Rosas	Montreal	Moon	Paradise	Rio Vista	Valle del Sol	Callisto	Cielo Del Rio	Flores	Leonor Estates	Marina	Memorial	Place	Veterans	Future Linear Park
Grass	High	•	•					•		•	•									
Grills	High	•		•	•	•	•	•		•	•									
Irrigation Systems	High																			
Multipurpose Fields	High																			
New Neighborhood Parks	High											•	•	•	•	•	•	•	•	
Park Signage	High	•		•	•	•	•	•	•	•	•									
Picnic Tables	High																			
Playgrounds	High	•		•	•		•	•	•		•									
Shade Canopies	High	•					•													
Site Lighting	High	•			•	•		•	•	•	•									
Trash Receptacles	High																			
Walking Trails	High	•		•		•		•	•		•									
Aquatics Center	Moderate																			
Benches	Moderate				•					•	•									
Fencing	Moderate						•													
Parking	Moderate				•	•														
Park Land Acquisition	Moderate																			
Splashpads	Moderate																			
Trees	Moderate					•														
Drinking Fountains	Moderate									•										
ATV Trails	Low																			•
Baseball Fields	Low				•															
Basketball Courts	Low								•											
Dog Park	Low																			
Exercise Stations	Low										•									
Pavilions	Low																			
Restrooms	Low																			
Soccer Fields	Low	•									•									

Proposed Project Scope and Intent

PROJECT	DESCRIPTION
Grass	Overseed turfgrass areas with drought tolerant seed mix
Grills	Charcoal barbecue grill
Irrigation Systems	Automated underground sprinkler system at turfgrass areas and trees
Multipurpose Fields	Open play area with irrigated turfgrass
New Neighborhood Parks	Develop existing undeveloped parkland with standard neighborhood park amenities
Park Signage	Standard wooden park sign
Picnic Tables	Seating for 6
Playgrounds	Prefabricated playground for ages 2-12 years
Shade Canopies	Fabric shade canopy
Site Lighting	12' pedestrian pole lighting
Trash Receptacles	Surface-mounted with lid enclosure
Walking Trails	4' wide crushed gravel walking trail
Aquatics Center	Outdoor pool with splashpad and waterpark amenities
Benches	Benches with backrest and armrests
Fencing	Chain-link fencing
Parking	Concrete parking lot

Park Land Acquisition	Purchase of park land sites
Splashpads	Prefabricated splashpad
Trees	3 inch caliper shade trees
Drinking Fountains	Steel drinking fountain, utility extension not included
ATV Trails	Compacted surfacing for multipurpose trails at future linear park site
Baseball Fields	Youth or adult baseball fields with lighting, bleachers, and shade canopies
Basketball Courts	Basketball court with lighting
Dog Park	Dog park including fencing, seating, and shade canopies
Exercise Stations	A group of 4-5 exercise stations along walking trail
Pavilions	Prefabricated steel/wood pavilion,
Restrooms	Prefabricate restroom facility not including utility extensions
Soccer Fields	Striped soccer field with goals and bleachers, no lighting

8. APPENDICES

Public Input Documentation

Town Hall Meeting

Notice

Sign-in

Resident Survey

Form

Summary of Responses

Proof of Adoption

Formal resolution/ordinance

PUBLIC MEETING

The City of Socorro is seeking public input regarding our Parks and Recreation system.

Please join us and voice your opinion to help establish a vision and direction for the future of our park system. The public input received will guide the goals and objectives of the new Parks Master Plan currently being drafted.

Wednesday June 15, 2016 6:30 PM

City Chambers

860 N. Rio Vista Rd.

For more information (915) 858-2915



Socorro Parks Master Plan Resident Survey (Encuesta del Plan Maestro para Parques de la Ciudad de Socorro)

The City of Socorro, Texas is currently creating a master plan for the parks and recreation system. This survey allows the residents of Socorro to provide input that will be used to assess current needs and develop priorities for future development of the Socorro park system.

(La ciudad de Socorro, Tejas está diseñando un plan maestro para los parques y sistema de recreación. Esta encuesta permite a los residentes de Socorro proporcionar puntos de vista que se utilizarán para evaluar las necesidades actuales y elaborar las prioridades para el desarrollo futuro del sistema de parques de la ciudad.)

* Required

Park Satisfaction (Satisfacción de los Parques)

The following questions address your satisfaction with the current park system.

(Las siguientes preguntas están dirigidas a su satisfacción actual con el sistema existente de parques.)

1. **Overall, how satisfied are you with the quality of parks and recreation services provided in Socorro? (En general, cuán satisfecho está usted con la calidad de los servicios de parques y recreación proporcionados por la Ciudad de Socorro?) ***

Mark only one oval.

- ☐ Very satisfied (Muy satisfecho)
- ☐ Satisfied (Satisfecho)
- ☐ Somewhat satisfied (Algo satisfecho)
- ☐ Not satisfied (Nada satisfecho)
- ☐ Very unsatisfied (Muy insatisfecho)

2. **How would you rate the overall condition of parks? (Cómo calificaría el estado general de los parques?) ***

Mark only one oval.

- ☐ Very good (Muy bueno)
- ☐ Good (Bueno)
- ☐ Fair (Regular)
- ☐ Poor (Malo)
- ☐ Very poor (Muy pobre)

3. How would you rate your satisfaction with the maintenance of parks? (Cómo calificaría su satisfacción en el mantenimiento de los parques?) *

Mark only one oval.

	1	2	3	4	5	
Not satisfied (No satisfecho)	<input type="radio"/>	<input type="radio"/>	<input type="radio"/>	<input type="radio"/>	<input type="radio"/>	Satisfied (Satisfecho)

4. How would you rate your satisfaction with the safety and security of parks? (Cómo calificaría su satisfacción con la seguridad y protección de los parques?) *

Mark only one oval.

	1	2	3	4	5	
Not Satisfied (No satisfecho)	<input type="radio"/>	<input type="radio"/>	<input type="radio"/>	<input type="radio"/>	<input type="radio"/>	Satisfied (Satisfecho)

5. How would you rate your satisfaction with the quantity of parks? (Cómo calificaría su satisfacción con la cantidad de parques?) *

Mark only one oval.

	1	2	3	4	5	
Not satisfied (No satisfecho)	<input type="radio"/>	<input type="radio"/>	<input type="radio"/>	<input type="radio"/>	<input type="radio"/>	Satisfied (Satisfecho)

6. How would you rate your satisfaction with the location of parks (distance from your home)? (Cómo calificaría su satisfacción con la ubicación de los parques (distancia desde su casa)) *

Mark only one oval.

	1	2	3	4	5	
Not Satisfied (No satisfecho)	<input type="radio"/>	<input type="radio"/>	<input type="radio"/>	<input type="radio"/>	<input type="radio"/>	Satisfied (Satisfecho)

7. How would you rate your satisfaction with the variety of park amenities? (Cómo calificaría su satisfacción con la variedad de las instalaciones y juegos en los parques?) *

Mark only one oval.

	1	2	3	4	5	
Not satisfied (No satisfecho)	<input type="radio"/>	<input type="radio"/>	<input type="radio"/>	<input type="radio"/>	<input type="radio"/>	Satisfied (Satisfecho)

8. How would you rate your satisfaction with sports and athletic fields? (Cómo calificaría su satisfacción con las canchas de deportes y campos de atletismo?) *

Mark only one oval.

	1	2	3	4	5	
Not satisfied (No satisfecho)	<input type="radio"/>	<input type="radio"/>	<input type="radio"/>	<input type="radio"/>	<input type="radio"/>	Satisfied (Satisfecho)

9. How would you rate your satisfaction with the recreation centers and programs? (Cómo calificaría su satisfacción con los centros y programas de recreación?) *

Mark only one oval.

	1	2	3	4	5	
Not satisfied (No satisfecho)	<input type="radio"/>	<input type="radio"/>	<input type="radio"/>	<input type="radio"/>	<input type="radio"/>	Satisfied (Satisfecho)

Park Utilization (Uso de Parques)

The following questions address your utilization of the current park system.

(Las siguientes preguntas estan dirigidas al uso que usted le da al sistema de parques.)

10. How often do you or a member of your household typically visit a park? (Con qué frecuencia usted o un miembro de su hogar suelen visitar un parque?) *

Mark only one oval.

- ☐ Daily (Diariamente)
- ☐ Weekly (Semanalmente)
- ☐ Monthly (Mensualmente)
- ☐ A few times a year (Un par de veces al año)
- ☐ Less than once a year (Menos de una vez al año)

11. Which park do you attend most frequently? (A cual parque asiste usted con mayor frecuencia?) *

Mark only one oval.

- ☐ Amistad
- ☐ Bulldog Championship
- ☐ Cielo Azul
- ☐ Cougar
- ☐ Mauro Rosas (Bonita)
- ☐ Moon
- ☐ Paradise
- ☐ Rio Vista
- ☐ Valle del Sol
- ☐ Valle Hermosa
- ☐ None (Ninguno)

17. How would you rate the importance of having a variety of park amenities? (Cómo calificaría la importancia de contar con una mayor variedad de atracciones en el parque?) *

Mark only one oval.

	1	2	3	4	5	
Not Important (Sin importancia)	<input type="radio"/>	<input type="radio"/>	<input type="radio"/>	<input type="radio"/>	<input type="radio"/>	Important (Importante)

18. How would you rate the importance of having sports and athletic fields? (Cómo calificaría la importancia de contar con canchas de deportes y campos de atletismo?) *

Mark only one oval.

	1	2	3	4	5	
Not Important (Sin importancia)	<input type="radio"/>	<input type="radio"/>	<input type="radio"/>	<input type="radio"/>	<input type="radio"/>	Important (Importante)

19. How would you rate the importance of having recreation centers and programs? (Cómo calificaría la importancia de contar con centros y programas de recreación?) *

Mark only one oval.

	1	2	3	4	5	
Not Important (Sin importancia)	<input type="radio"/>	<input type="radio"/>	<input type="radio"/>	<input type="radio"/>	<input type="radio"/>	Important (Importante)

20. Which of the following are important to you to be prioritized for future funding? (check all that apply) (Cuáles de los siguientes opciones son de su prioridad para el futuro financiamiento? (marque todo lo que corresponda) *

Check all that apply.

- ☐ Enhance existing park maintenance (Mejorar al mantenimiento actual del parque)
- ☐ Provide additional recreation center programs and classes (Ofrecer mas programas en centros de recreación y clases)
- ☐ Build new parks in under-served or growing neighborhoods (Construir nuevos parques en comunidades marginadas o en barrios en crecimiento)
- ☐ Renovate existing parks with new equipment and amenities (Renovar los parques que existen con nuevos equipos y servicios)
- ☐ Acquire land to accommodate future growth and open space (Adquirir terrenos para acomodar el crecimiento futuro y espacios abiertos)
- ☐ Develop a trail system for walking, biking, and linear parks (Desarrollar un sistema de senderos para caminata y ciclismo)

21. Which of the following is the MOST important to you to be prioritized for future funding? (check one) (Cuál de las siguientes opciones es de primera prioridad para usted para financiamiento en el futuro? (marque solo uno) *

Check all that apply.

- ☐ Enhance existing park maintenance (Mejorar al mantenimiento actual del parque)
- ☐ Provide additional recreation center programs and classes (Ofrecer mas programas en centros de recreación y clases)
- ☐ Build new parks in under-served or growing neighborhoods (Construir nuevos parques en comunidades marginadas o en barrios en crecimiento)
- ☐ Renovate existing parks with new equipment and amenities (Renovar los parques que existen con nuevos equipos y servicios)
- ☐ Acquire land to accommodate future growth and open space (Adquirir terrenos para acomodar el crecimiento futuro y espacios abiertos)
- ☐ Develop a trail system for walking, biking, and linear parks (Desarrollar un sistema de senderos para caminata y ciclismo)

Classification (Clasificacion)

The following questions are for resident classification only. Your responses are anonymous.

(Las siguientes preguntas son únicamente para la clasificación de residente. Sus respuestas son anónimas.)

22. How long have you been a resident of Socorro? (Cuánto tiempo ha sido residente de Socorro?) *

Mark only one oval.

- ☐ Less than 12 months (Menos de 12 meses)
- ☐ 1-5 years (1-5 años)
- ☐ 6-10 years (6-10 años)
- ☐ 11-15 years (11-15 años)
- ☐ More than 15 years (Más de 15 años)

23. What is your gender? (Cuál es su género?) *

Mark only one oval.

- ☐ Male (Hombre)
- ☐ Female (Mujer)

24. What is your age? (Cuál es su edad?) *

Mark only one oval.

- ☐ 5-19
- ☐ 20-34
- ☐ 35-49
- ☐ 50-69
- ☐ 70+

25. **How many children under the age of 18 live in your home? (Cuántos niños menores de 18 años viven en su hogar?) ***

Mark only one oval.

- ☐ None (Ninguno)
- ☐ 1
- ☐ 2
- ☐ 3
- ☐ 4 or more (4 o más)

Additional Comments (Comentarios adicionales)

The following section is for you to provide additional comments related to the parks master plan.

(La siguiente sección es para que usted pueda proporcionar comentarios adicionales relacionados con el plan maestro de parques.)

26. **Please provide any further comments or concerns below. Please use this opportunity to let us know if they are any specific needs or desires that you have for the park system that were not addressed in the questions above. (Por favor, incluya cualquier comentario o duda. Por favor, utilice este espacio para hacernos saber si sus necesidades o deseos específicos que tiene para el sistema de parques se abordaron en las preguntas anteriores.)**

.....

.....

.....

Powered by



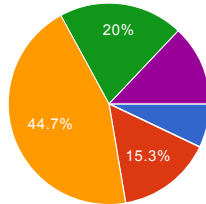
85 responses

[View all responses](#) [Publish analytics](#)

Summary

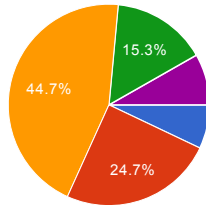
Park Satisfaction (Satisfacion de los Parques)

Overall, how satisfied are you with the quality of parks and recreation services provided in Socorro? (En general, cuán satisfecho está usted con la calidad de los servicios de parques y recreación proporcionados por la Ciudad de Socorro?)



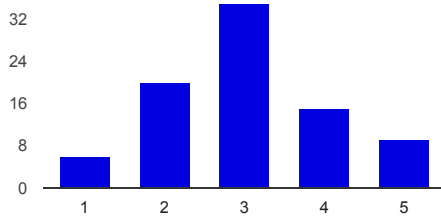
Very satisfied (Muy satisfecho)	6	7.1%
Satisfied (Satisfecho)	13	15.3%
Somewhat satisfied (Algo satisfecho)	38	44.7%
Not satisfied (Nada satisfecho)	17	20%
Very unsatisfied (Muy insatisfecho)	11	12.9%

How would you rate the overall condition of parks? (Cómo calificaría el estado general de los parques?)



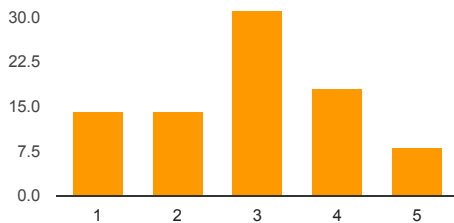
Very good (Muy bueno)	6	7.1%
Good (Bueno)	21	24.7%
Fair (Regular)	38	44.7%
Poor (Malo)	13	15.3%
Very poor (Muy pobre)	7	8.2%

How would you rate your satisfaction with the maintenance of parks? (Cómo calificaría su satisfacción en el mantenimiento de los parques?)



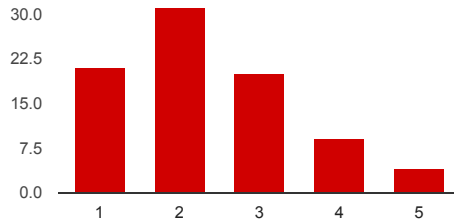
Not satisfied (No satisfecho): 1	6	7.1%
2	20	23.5%
3	35	41.2%
4	15	17.6%
Satisfied (Satisfecho): 5	9	10.6%

How would you rate your satisfaction with the safety and security of parks? (Cómo calificaría su satisfacción con la seguridad y protección de los parques?)



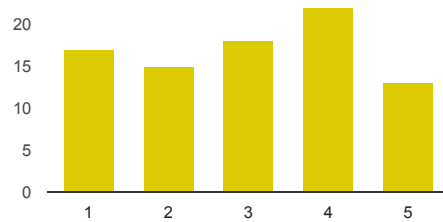
Not Satisfied (No satisfecho): 1	14	16.5%
2	14	16.5%
3	31	36.5%
4	18	21.2%
Satisfied (Satisfecho): 5	8	9.4%

How would you rate your satisfaction with the quantity of parks? (Cómo calificaría su satisfacción con la cantidad de parques?)



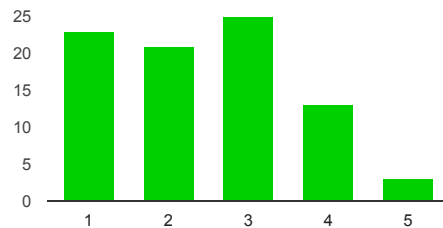
Not satisfied (No satisfecho):	1	21	24.7%
	2	31	36.5%
	3	20	23.5%
	4	9	10.6%
Satisfied (Satisfecho):	5	4	4.7%

How would you rate your satisfaction with the location of parks (distance from your home)? (Cómo calificaría su satisfacción con la ubicación de los parques (distancia desde su casa)?)



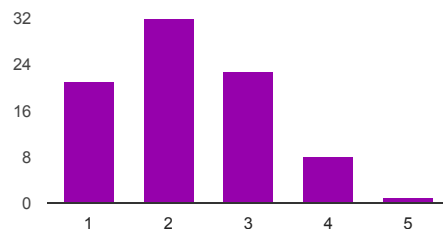
Not Satisfied (No satisfecho):	1	17	20%
	2	15	17.6%
	3	18	21.2%
	4	22	25.9%
Satisfied (Satisfecho):	5	13	15.3%

How would you rate your satisfaction with the variety of park amenities? (Cómo calificaría su satisfacción con la variedad de las instalaciones y juegos en los parques?)



Not satisfied (No satisfecho):	1	23	27.1%
	2	21	24.7%
	3	25	29.4%
	4	13	15.3%
Satisfied (Satisfecho):	5	3	3.5%

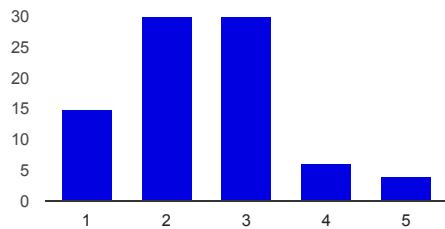
How would you rate your satisfaction with sports and athletic fields? (Cómo calificaría su satisfacción con las canchas de deportes y campos de atletismo?)



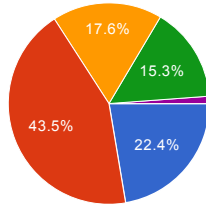
Not satisfied (No satisfecho):	1	21	24.7%
	2	32	37.6%
	3	23	27.1%
	4	8	9.4%
Satisfied (Satisfecho):	5	1	1.2%

How would you rate your satisfaction with the recreation centers and programs? (Cómo calificaría su satisfacción con los centros y programas de recreación?)

Not satisfied (No satisfecho):	1	15	17.6%
	2	30	35.3%
	3	30	35.3%
	4	6	7.1%
Satisfied (Satisfecho):	5	4	4.7%



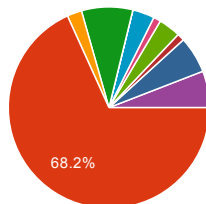
How often do you or a member of your household visit a park?



How often do you or a member of your household visit a park? (Con qué frecuencia usted o un miembro de su

Daily (Diariamente)	19	22.4%
Weekly (Semanalmente)	37	43.5%
Monthly (Mensualmente)	15	17.6%
A few times a year (Un par de veces al año)	13	15.3%
Less than once a year (Menos de una vez al año)	1	1.2%

Which park do you attend most frequently? (A cual parque asiste usted con mayor frecuencia?)



Amistad	0	0%
Bulldog Championship	58	68.2%
Cielo Azul	2	2.4%
Cougar	7	8.2%
Mauro Rosas (Bonita)	0	0%
Moon	3	3.5%
Paradise	1	1.2%
Rio Vista	3	3.5%
Valle del Sol	1	1.2%
Valle Hermosa	5	5.9%
None (Ninguno)	5	5.9%

Which of the following have you or a member of your household utilized in the past 12 months? (check all that apply)
(Cuál de las siguientes opciones usted o un miembro de su hogar ha utilizado en los últimos 12 meses? (marque todo lo que corresponda))

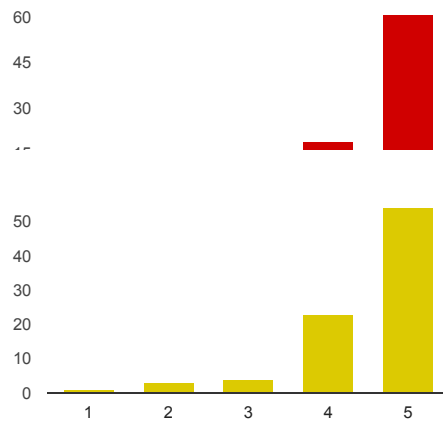


Visited a park (Visitado un parque)	82	96.5%
Used an athletic field (Utilizado un campo de atletismo)	20	23.5%
Participated in a recreation center program (Participado en un programa en centro de recreación)	9	10.6%

Prioritization of Future Park Development (Prioridades para el Desarrollo Futuro)

How would you rate the importance of improving park maintenance? (Cómo calificaría la importancia de mejorar el mantenimiento del parque?)

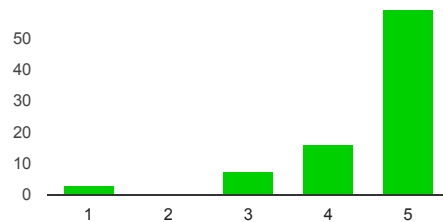
Not Important (Sin importancia): 1	0	0%
2	3	3.5%
3	2	2.4%
4	19	22.4%
Important (Importante): 5	61	71.8%



How would you rate the importance of safety and security? (Cómo calificaría la importancia de mejorar la

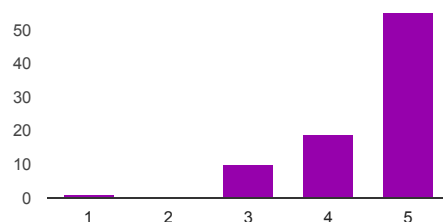
Not Important (Sin importancia):	1	1	1.2%
	2	3	3.5%
	3	4	4.7%
	4	23	27.1%
Important (Importante):	5	54	63.5%

How would you rate the importance of building more parks? (Cómo calificaría la importancia de la construcción de más parques?)



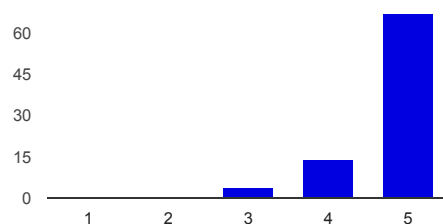
Not Important (Sin importancia):	1	3	3.5%
	2	0	0%
	3	7	8.2%
	4	16	18.8%
Important (Importante):	5	59	69.4%

How would you rate the importance of parks being located close to your home? (Cómo calificaría la importancia de que un parque que ubiquen cerca de su casa?)



Not Important (Sin importancia):	1	1	1.2%
	2	0	0%
	3	10	11.8%
	4	19	22.4%
Important (Importante):	5	55	64.7%

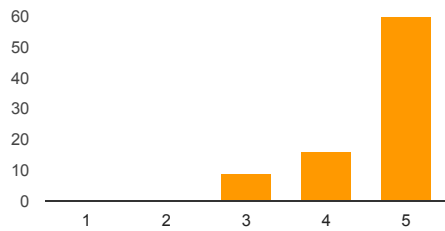
How would you rate the importance of having a variety of park amenities? (Cómo calificaría la importancia de contar con una mayor variedad de atracciones en el parque?)



Not Important (Sin importancia):	1	0	0%
	2	0	0%
	3	4	4.7%
	4	14	16.5%
Important (Importante):	5	67	78.8%

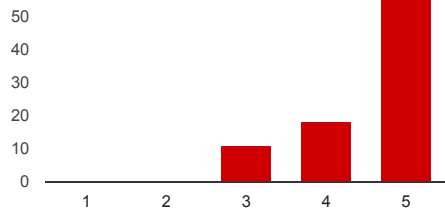
How would you rate the importance of having sports and athletic fields? (Cómo calificaría la importancia de contar con canchas de deportes y campos de atletismo?)

Not Important (Sin importancia):	1	0	0%
	2	0	0%



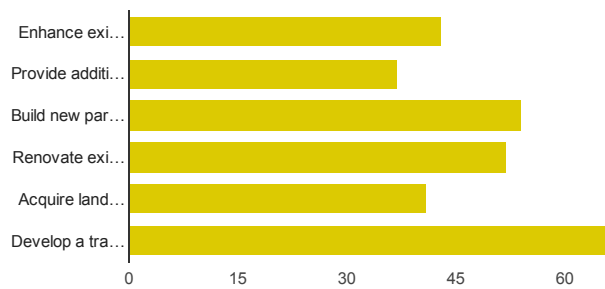
3	9	10.6%
4	16	18.8%
Important (Importante): 5	60	70.6%

How would you rate the importance of having recreation centers and programs? (Cómo calificaría la importancia de contar con centros y programas de recreación?)



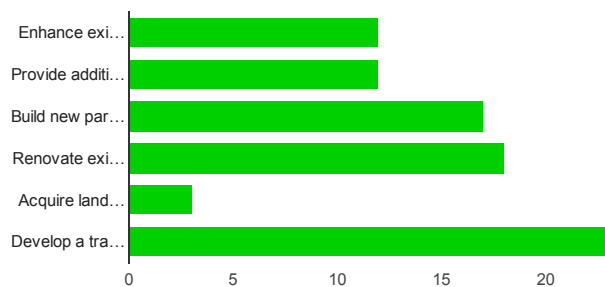
Not Important (Sin importancia): 1	0	0%
2	0	0%
3	11	12.9%
4	18	21.2%
Important (Importante): 5	56	65.9%

Which of the following are important to you to be prioritized for future funding? (check all that apply) (Cuáles de las siguientes opciones son de su prioridad para el futuro financiamiento? (marque todo lo que corresponda))



Enhance existing park maintenance (Mejorar al mantenimiento actual del parque)	43	50.6%
Provide additional recreation center programs and classes (Ofrecer mas programas en centros de recreación y clases)	37	43.5%
Build new parks in under-served or growing neighborhoods (Construir nuevos parques en comunidades marginadas o en barrios en crecimiento)	54	63.5%
Renovate existing parks with new equipment and amenities (Renovar los parques que existen con nuevos equipos y servicios)	52	61.2%
Acquire land to accommodate future growth and open space (Adquirir terrenos para acomodar el crecimiento futuro y espacios abiertos)	41	48.2%
Develop a trail system for walking, biking, and linear parks (Desarrollar un sistema de senderos para caminata y ciclismo)	66	77.6%

Which of the following is the MOST important to you to be prioritized for future funding? (check one) (Cuál de las siguientes opciones es de primera prioridad para usted para financiamiento en el futuro? (marque solo uno))

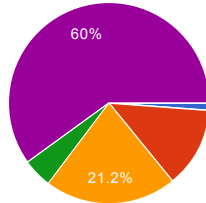


Enhance existing park maintenance (Mejorar al mantenimiento actual del parque)	12	14.1%
Provide additional recreation center programs and classes (Ofrecer mas programas en centros de recreación y clases)	12	14.1%
Build new parks in under-served or growing neighborhoods (Construir nuevos parques en comunidades marginadas o en barrios en crecimiento)	17	20%

Renovate existing parks with new equipment and amenities (Renovar los parques que existen con nuevos equipos y servicios)	18	21.2%
Acquire land to accommodate future growth and open space (Adquirir terrenos para acomodar el crecimiento futuro y espacios abiertos)	3	3.5%
Develop a trail system for walking, biking, and linear parks (Desarrollar un sistema de senderos para caminata y ciclismo)	23	27.1%

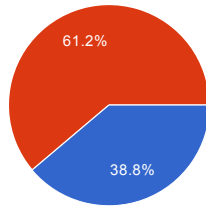
Classification (Clasificacion)

How long have you been a resident of Socorro? (Cuánto tiempo ha sido residente de Socorro?)



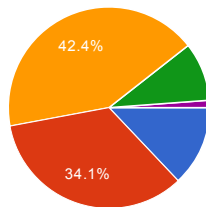
Less than 12 months (Menos de 12 meses)	1	1.2%
1-5 years (1-5 años)	11	12.9%
6-10 years (6-10 años)	18	21.2%
11-15 years (11-15 años)	4	4.7%
More than 15 years (Más de 15 años)	51	60%

What is your gender? (Cuál es su género?)



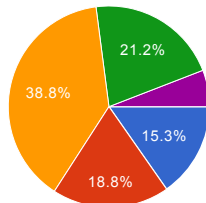
Male (Hombre)	33	38.8%
Female (Mujer)	52	61.2%

What is your age? (Cuál es su edad?)



5-19	11	12.9%
20-34	29	34.1%
35-49	36	42.4%
50-69	8	9.4%
70+	1	1.2%

How many children under the age of 18 live in your home? (Cuántos niños menores de 18 años viven en su hogar?)



None (Ninguno)	13	15.3%
1	16	18.8%
2	33	38.8%
3	18	21.2%
4 or more (4 o más)	5	5.9%

Additional Comments (Comentarios adicionales)

Please provide any further comments or concerns below. Please use this opportunity to let us know if they are any specific needs or desires that you have for the park system that were not addressed in the questions above. (Por favor, incluya cualquier comentario o duda. Por favor, utilice este espacio para hacernos saber si sus necesidades o deseos específicos que tiene para el sistema de parques se abordaron en las preguntas anteriores.)

The bulldog park needs better lights..

For the most part half the parks are taken care of enough for safe use but some are in serious need of new equipment to prevent any accounts in the future.

It would be nice if there was classes and activities available for English speakers St the recreation centers.

The cielo azul park is behind my home and I have never consider that a park but a pice of land in the middle of the block is sand I been here my hole child hood and now with children and the park doesn't even have a swing set. Very disappointed

It is a great shame that Socorro City is one of the cities that is so deprived in all aspects.

Updating or building sidewalks to future parks

Parks are great, but I think that's enough. We don't need more. This city needs to focus on fixing the streets, adding sidewalks so kids can get to school and come back safley & stop with the free events. Yes, they are nice once & a while, but you really are only getting people from Juarez enjoying it, not really the tax payers. Put the money back into the community, even helping the elderly, but stop throwing our hard earned money down the drain. We pay too much in taxes for it to look the way it does.

Bulldog park can be weeded out more often. Grass and weeds over grown and cacti dried up. Park not kept up

Me gustaria mas actividades para los ninos con discapacidaded

would love to see a park in my neighborhood. on google maps it shows there is one but its not true. this so called "joe carrasco" park is at the corner of northloop and welletka. would love to see. park in that place.

I would love to see running and biking trails. It would be a great asset to our city and would greatly benefit our community.

More signs needed along the walking path notifying people to pick up there dogs poop and signs not to get close to the pond water.

The park in jardin de flores was supposed to have a lot more. All the residents here are disapointed with the lack of things to do in such a big space

Sports Leagues such as Baseball and Softball should be provided for the children of Socorro.

for some reason I keep seeing the increase of gang graffiti in the area infront of the highs schools campentre and moon city.....you can fix all the parks overnight but if we as a community don't get involved and bring youth sports the gangs will continue to grow.....let's not be reactive let's be proactive...thank you

We really appreciate your very good intention to make best places for our city.

Feel free to contact me at 915-526-0342

To have more events at bulldog park instead of cougar park, buying the land next to bulldog park to extend park with basketball courts and or soccer fields as well as more parking areas. Bulldog park is a very nice park and is rarely used for events.

At least one park should be made available in the Haciendas Del Valle subdivision off of Welletka road. None are available there for residents and those citizens are some of the oldest taxpayers of the city. Improvements should be made there to improve their quality of life. Our city owes it to this neighborhood.

To enforce laws that allow people to take their pets, but also make sure they clean after themselves and their pets. That way our parks stay clean.

Las Lunas subdivision was promised a park and all we have is a slab of concrete and some grass. At least finish the basketball court!

Why charge for use of park for having picnics or unnecessary charging for using the park for exercising cause were using an hour of light charging more than an electric bill at home thats ridiculous

As I enter my golden years, I think it important for those of us that have resided in the Moon City area to have a decent, safe, and accessible park which will allow us to at least walk daily without the fear of dogs and not having restroom facilities. We have lived in this area for over 50 years, and I have yet to see a real and conscientious effort by our city officials to provide for us a decent park.

Improve ponding/parks with grass and sprinklers. For safety reasons, some lighting.

We need to improve streets all around the parks as well. All we here is that the area is private. We need sidewalks and street repaired the safety of the children.

WE ARE IN NEED OF AQUATIC FACILITIES SOUTH OF THE FREEWAY. SWIMMING LESSONS

A dog park would also be nice, around the Rio Vista, moon road area. The Valles park could use more shade.

You should make a park close to serna middle school or rojas elementary school on that area theres not much to do and also one with pool because theres any close the closest one with pool is in ysleta

make more swimming pools

Mauro Rosas Park or Bonito Park were nice parks once, they have been in the works for quite some time now, no progress whatsoever has been shown!

aljo estates has no parks we play in the street. call me ill show you respectfully sgt jesse montelongo us army retirad. 915-373-8440 one team one fight!!!!

More side walks in Aljo estates and parks for kids

I have enjoyed the many festivities that the recreation department has put together. Especially movies at the park. I would like to see this continue in the future. I would also like to see more security in local parks and lighting at Bulldog.

I'd like to talk a little bit more about the park being built at the end of Peters Rd. (Close to Passmore) because in a coincidence I ended up meeting the person in charge of building it who then proceeded to tell me that the park was already finished and will not have any sidewalks nor parking spaces. My issue here is that a few years ago, us residents of the area received a plan with photos and everything that was promessed for that location (including water structures and games appropriate for younger was well), but the park is looking nothing like it. I would like to further discuss this with someone that might help. Thank you. Frida Espinoza frida.espinoza96@gmail.com