

STORMWATER Pollution Prevention For Small Businesses

Stormwater pollution is the different harmful substances that are washed off into streets, storm drains, canals, and ditches. Pollution like **soaps, detergents, oils, greases, paints, solvents, and trash and litter** can contaminate stormwater runoff and be harmful to humans, animals, and the environment. **Stormwater pollution is illegal.** Keeping our stormwater clean and our community beautiful is everyone's job! Follow these important tips to ensure your small business is in compliance and does not contribute to stormwater pollution:

1 Cleaning Your Small Business...

Use a broom instead of a hose to clean sidewalks and parking lots. Empty wash water from cleaning kitchen mats, grease traps, trash cans, paint brushes, etc into a sanitary sewer drain. Never dump wash water into a storm drain, canal, or ditch.



2 Car Washing and Maintenance

Soaps and detergents from car washing must be emptied into sanitary sewers and should not be allowed to runoff into streets and storm drains. Contain all leaking fluids from cars and recycle motor oils and filters at your nearest auto shop.



3 Waste Management

Always keep your dumpster closed and ask your hauler to exchange it if it has a damaged lid or is leaking. Never dispose of hazardous waste and dangerous chemicals in dumpsters. Keep sidewalks and store fronts free of trash and litter.



4 Proper Storage

Anything that is stored outside must be properly secured and covered, including sand, gravel, and cement bags. Keep cans, drums, and bottles tightly closed and check for leaks regularly. Always follow proper storage procedures for each material type



Pollution prevention is GOOD FOR BUSINESS!

5 When landscaping...

Blow leaves or yard clippings away from storm drains, sidewalks and streets. Cover areas of bare soil with gravel, mulch, or native plants to prevent soil erosion. Plant a rain garden to control stormwater runoff and beautify your property or storefront.



6 Off-site Jobs

Carpet cleaning and power washing water should not be allowed to runoff into storm drains, streets, or ditches. Paint brushes and tools should be washed into a sanitary sewer since paint solvents are hazardous to wildlife and animals.



7 Construction Site Debris

Construction activities are a major source of stormwater pollution. Keep construction sites clean by stockpiling soil, and designating and protecting waste disposal areas. Litter of any kind is illegal. Call the Planning and Zoning Department at 915-872-8724 for more information.



8 LVWD's Fats, Oils, and Grease (FOG) Program

If you own a restaurant, register with the Lower Valley Water District's (LVWD) Fats, Oils, and Grease (FOG) Program. Never dump fats, oils, or greases down sanitary sewers, storm drains, canals or ditches. **Fats, oils and greases can accumulate** in your sewer pipes and cause major blockages that are **expensive to repair**. Know your grease trap's capacity, clean it often, and never allow it to overflow. Keep exhaust hoods, fans, filters, and grease collection systems clean. **Call the LVWD at 915-791-4480 for more information.**

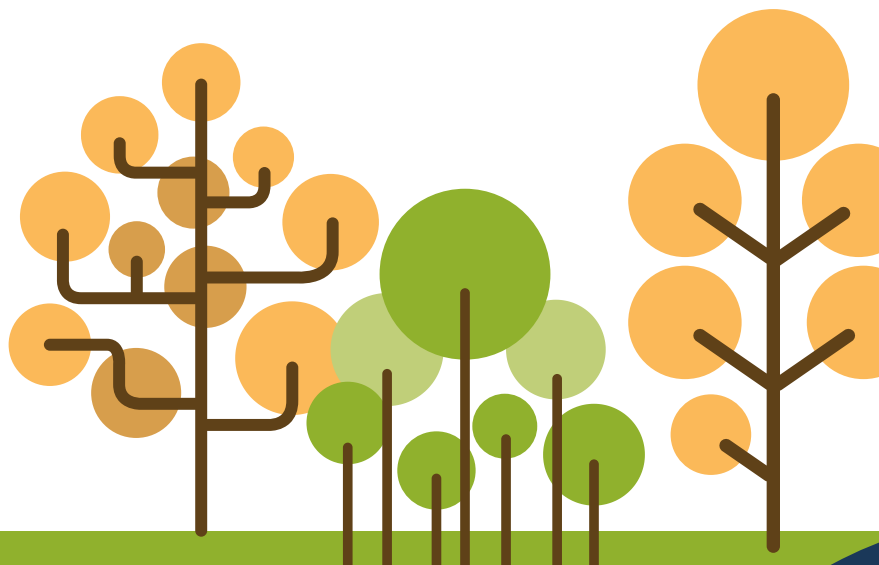


For more information visit

<http://ci.socorro.tx.us/stormwater-management/>



KEEP SOCORRO BEAUTIFUL



A City with a Mission
124 Horizon Blvd.
Socorro, Texas 79927
915-858-2915

